

Energy Savings at the Moses Chicken Farm

OVERVIEW

The Moses Chicken Farm, situated in Southern Israel, faces the same obstacles as those faced by the majority of chicken farms around the world. With the rising expense of chicken feed and the reduced cost for eggs and meat products, chicken farms are facing financial constraints. The additional rise in the cost of electricity has caused farm operation and maintenance to increase as well. Moses Farm chose to implement an energy saving and efficiency solution as a means of improving their production and budget.

PowerSines advanced and smart energy controllers offer a cost-effective, non-disruptive solution with over 10% direct energy savings.

SOLUTION

The Moses Farm has numerous fans, lighting circuits, small electric engines and a range of conveyor belts. Following an energy audit survey conducted by SolarPower Energy Consultants, Moses Farm chose to implement PowerSines smart energy efficiency systems due to their advanced, robust and smart features. PowerSines reduced their overall electric costs and offered protection against voltage peaks. The installation was simple without any disruption to the Farm's business operation.



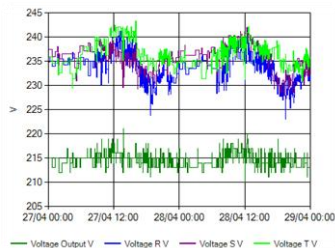
PowerSines ComEC, a universal energy controller for all loads, installs simply and quickly next to the main switch. With the Remote EMS the Moses Farm was able to monitor, control, configure as well as generate reports for analysis of energy consumption and savings during the pilot period and after.

RESULTS

The Moses Farm installed a ComEC 125A for a 4-month trial period. The sites input voltage ranged from 235V to 239V. ComEC stabilized and regulated the output voltage at 218V, in order to maximize savings.

	Monthly KWh	Annual KWh
Without ComEC	5000	60,000
With ComEC	4,425	53,100
The Moses Farm electric savings	11.5%	11.5%

PowerSines Remote EMS provides continuous non-stop monitoring, control, configuration and analysis of all energy consumption.



Voltage (V)	
Voltage R	234.5 V
Voltage S	239 V
Voltage T	240.5 V
Voltage Output	214 V

Description		Saved kWh	
Accumulated kWh		Valid only after AUDIT completion	
Today	82.9 kWh	SYS: AUDIT Completed	YES (Continuous)
Last day	124.4 kWh	Today Savings	4.4 kWh
This Week	78 kWh	Last Day Savings	9 kWh
Last Week	937 kWh	This Week Savings	3 kWh
This Month	3640 kWh	Last Week Savings	100 kWh
Last Month	4645 kWh	This Month Savings	462 kWh
This Year	16461 kWh	Last Month Savings	498 kWh
Last Year	6037 kWh	This Year Savings	1926 kWh
Total kWh	22503 kWh	Last Year Savings	671 kWh
kWh in Windows2	28	CO2 Savings	963 Kg

CASE STUDY

APPLICATION

Chicken Farm

BENEFITS

Up to 18% direct savings for all electric loads

ROI within 1.5-3 years

Quick and easy installation

No changes to existing electrical infrastructure

Voltage stabilization and control

Internal & manual bypass & protections

Decreases reactive energy

